



3,234 Sq Ft.

5 Bedrooms includes Den/Guest | Bonus Loft | 3.5 Bathrooms | 3 Tandem Car Garage



Elevation A

Modern Farmhouse



Elevation B

Full Modern



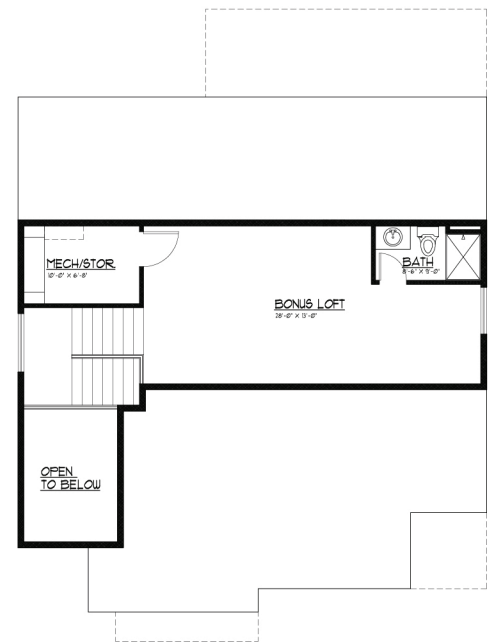
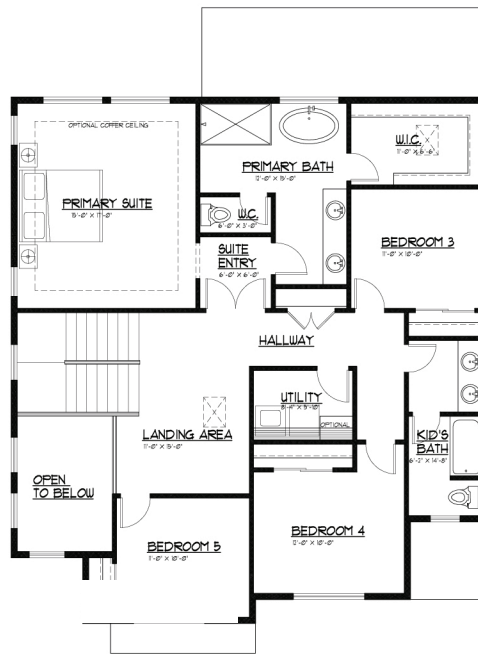
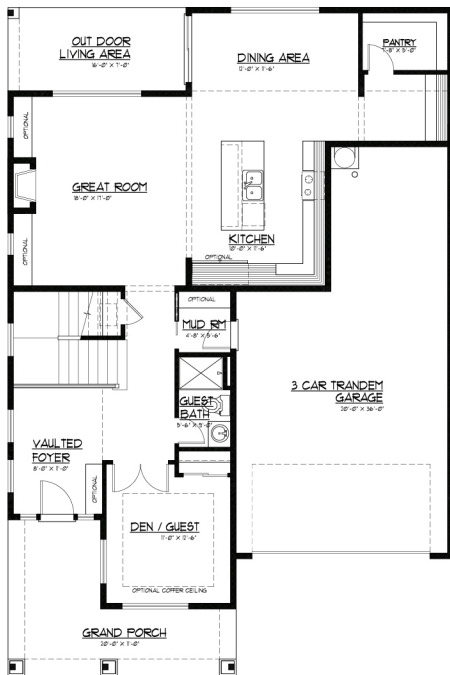
Elevation C

Craftsman

MAIN LEVEL FLOOR PLAN

SECOND LEVEL FLOOR PLAN

THIRD LEVEL FLOOR PLAN



JK MONARCH
FINE HOMES

JK Monarch seeks to constantly improve our homes, and to that end we reserve the right to change features, brand names, dimensions, architectural details, and designs. This document is for illustrative purposes and drawings are not to scale. Finishes, styles, and amenities shown may not be included, even under signed contract.

Mailing Address. P.O. Box 188 . Puyallup, Washington 98371 | phone. 253.840.5660

JKMONARCH.COM

