



# 3,219 Sq Ft.

4 Beds plus Guest (5th) Bed or Office | Bonus Loft | 2.75 Baths | 3 Car Garage



## Elevation A

MODERN FARMHOUSE

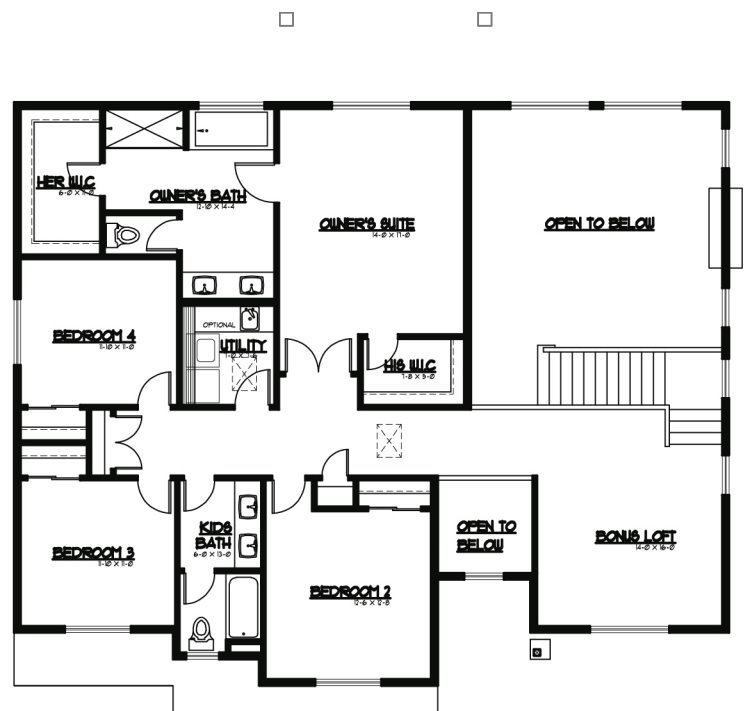
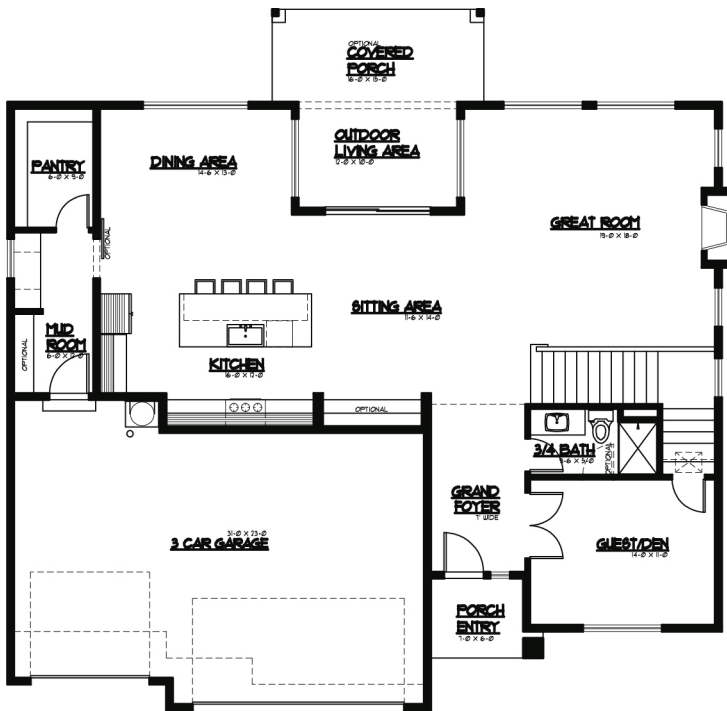


## Elevation B

FULL MODERN

MAIN LEVEL FLOOR PLAN

UPPER LEVEL FLOOR PLAN



**JK MONARCH**  
FINE HOMES

JK Monarch seeks to constantly improve our homes, and to that end we reserve the right to change features, brand names, dimensions, architectural details, and designs. This document is for illustrative purposes and drawings are not to scale. Finishes, styles, and amenities shown may not be included, even under signed contract.

Mailing Address. P.O. Box 188 . Puyallup, Washington 98371 | phone. 253.840.5660

JKMONARCH.COM

