



3,269 Sq Ft.

4 Bedroom | Primary on Main | 2.75 Baths | Office/Guest | Leisure Loft | 3 Car Garage



Elevation A

MODERN FARMHOUSE



Elevation B

FULL MODERN

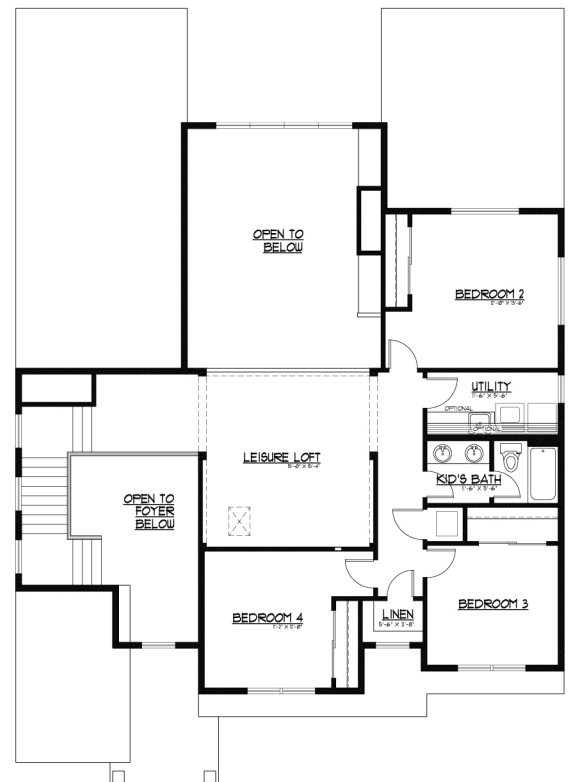
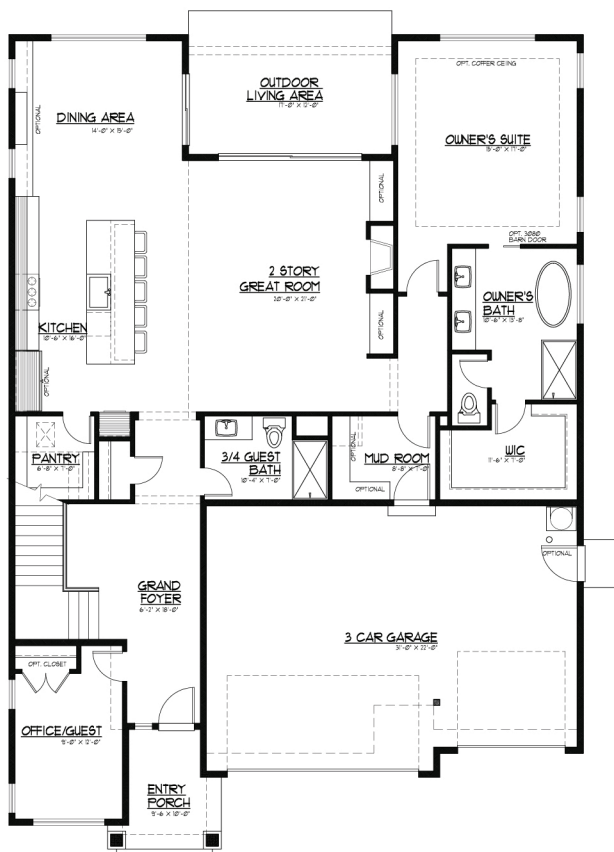


Elevation C

CRAFTSMAN

MAIN LEVEL FLOOR PLAN

UPPER LEVEL FLOOR PLAN



JK MONARCH
FINE HOMES

JK Monarch seeks to constantly improve our homes, and to that end we reserve the right to change features, brand names, dimensions, architectural details, and designs. This document is for illustrative purposes and drawings are not to scale. Finishes, styles, and amenities shown may not be included, even under signed contract.

Mailing Address: P.O. Box 188 . Puyallup, Washington 98371 | phone. 253.840.5660

JKMONARCH.COM

