



# Noll Terrace #1 - 2,978 Sq Ft.

4 Bedroom + Den | Guest on Main | Office | Loft | 2.75 Bathroom | 3 Car Garage

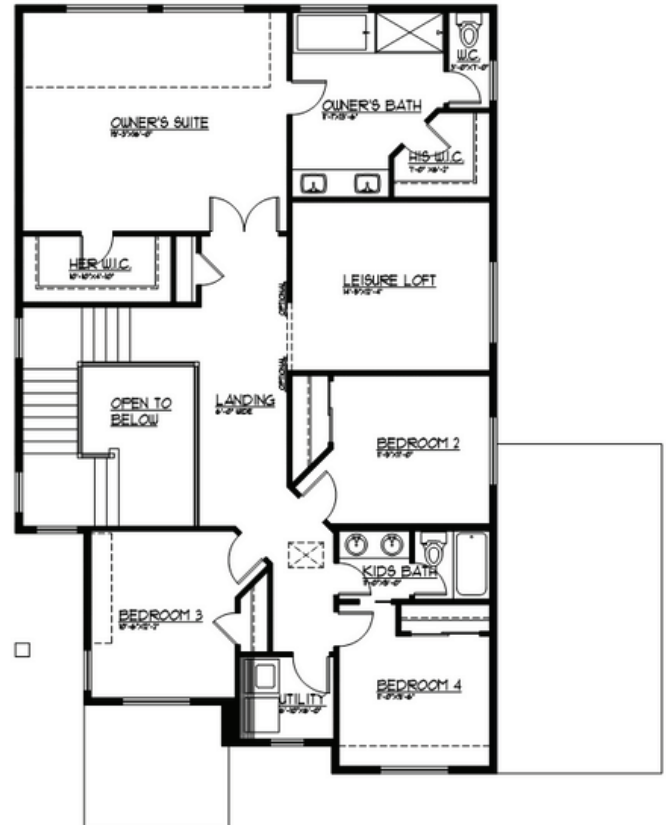
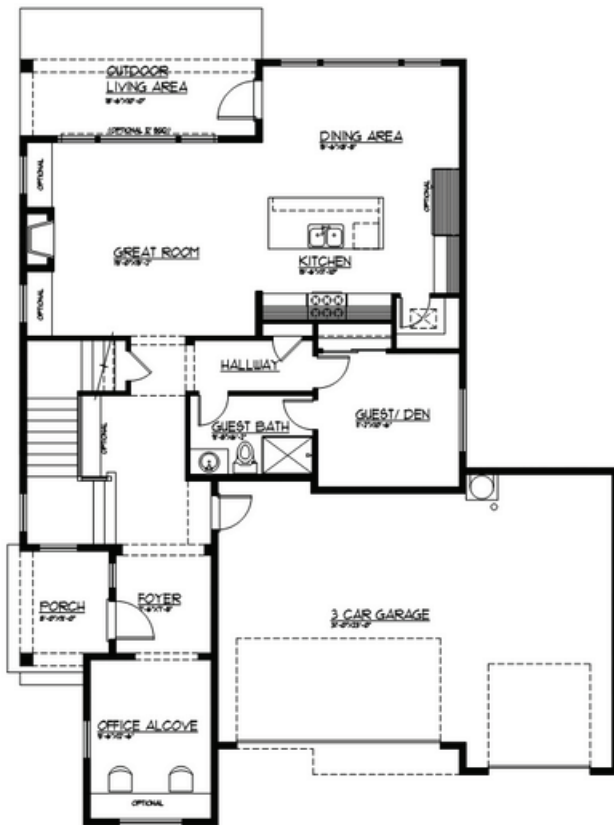


## Elevation B

FULL MODERN

MAIN LEVEL FLOOR PLAN

UPPER LEVEL FLOOR PLAN



**JK MONARCH**  
FINE HOMES

JK Monarch seeks to constantly improve our homes, and to that end we reserve the right to change features, brand names, dimensions, architectural details, and designs. This document is for illustrative purposes and drawings are not to scale. Finishes, styles, and amenities shown may not be included, even under signed contract.

