



# 2543 Sq Ft.

BIRCH PLAT

Primary Suite on Main | 4 Bedrooms | Bonus Loft | Office Alcove | 2.5 Baths | 3 Car Garage



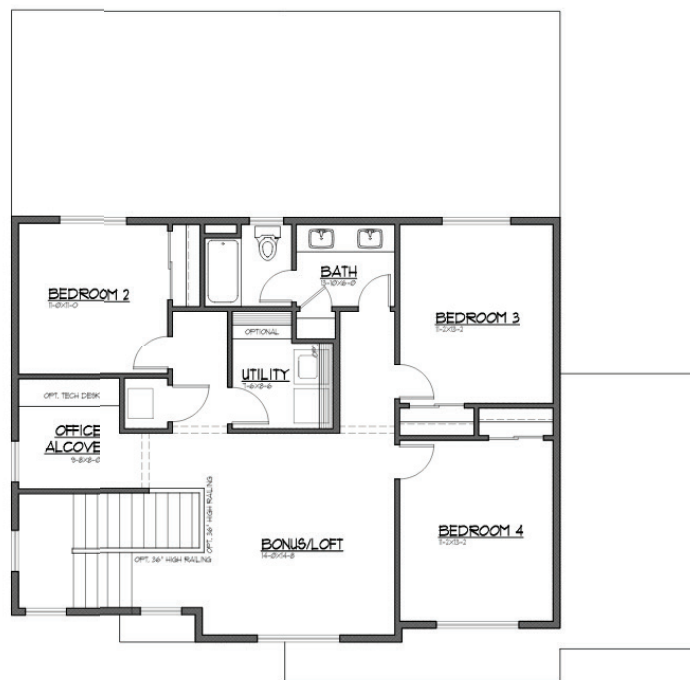
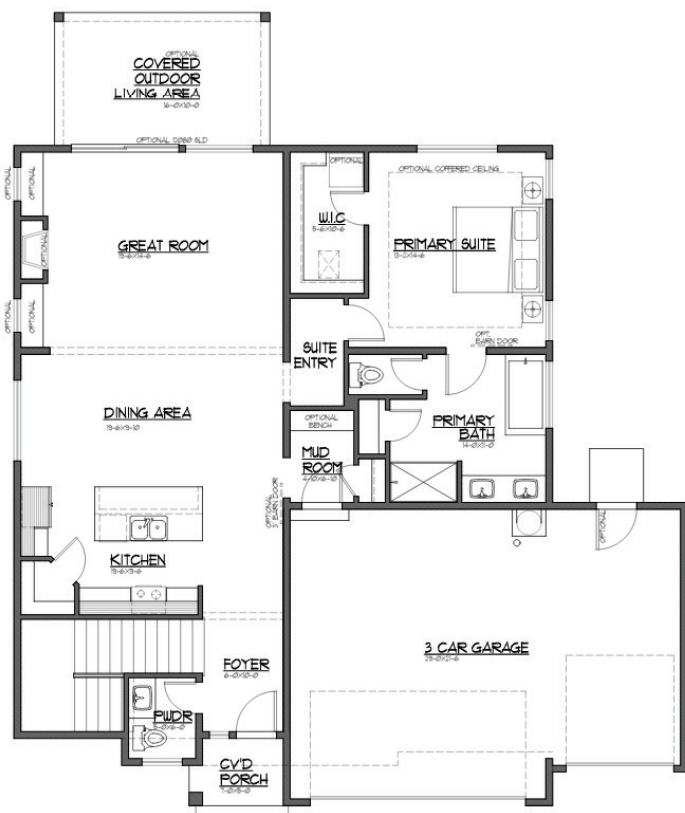
**Elevation A**  
Modern Farmhouse

1ST FLOOR



**Elevation C**  
Craftsman

2ND FLOOR



**JK MONARCH**  
FINE HOMES

JK Monarch seeks to constantly improve our homes, and to that end we reserve the right to change features, brand names, dimensions, architectural details, and designs. This document is for illustrative purposes and drawings are not to scale. Finishes, styles, and amenities shown may not be included, even under signed contract.

Mailing Address. P.O. Box 188 . Puyallup, Washington 98371 | phone. 253.840.5660

JKMONARCH.COM

