

PRICE REDUCED!
Builder Upgrades!



JK MONARCH

SOUTHCLIFFE - LOT 15
7330 W 22ND PL Kennewick

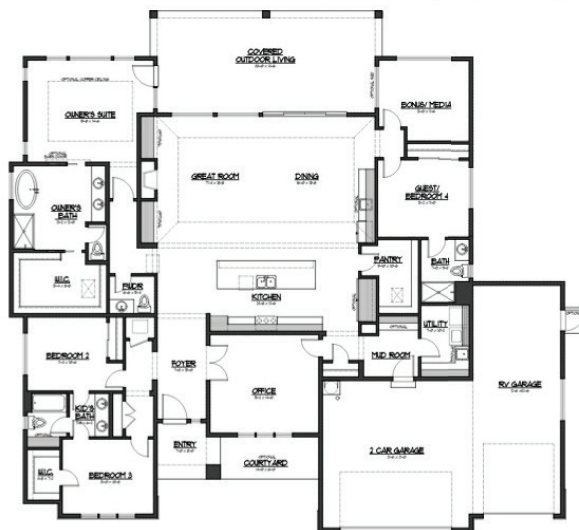
\$869,950.00

3275 B Elevation 2 Car + RV Garage

MOVE IN READY!

**This home has
builder upgrades
that include:**

**Man door in
garage**



RAMBLER

Visit WWW.JKMonarch.com or Contact Us for more information.

JK MONARCH
FINE HOMES

JK Monarch seeks to constantly improve our homes, and to that end we reserve the right to change features, brand names, dimensions, architectural details, and designs. This document is for illustrative purposes and drawings are not to scale. Finishes, styles, and amenities shown may not be included, even under signed contract.

Mailing Address. P.O. Box 188 . Puyallup, Washington 98371 | phone. 253.840.5660

JKMONARCH.COM



LAST UPDATED: 8-24-2023